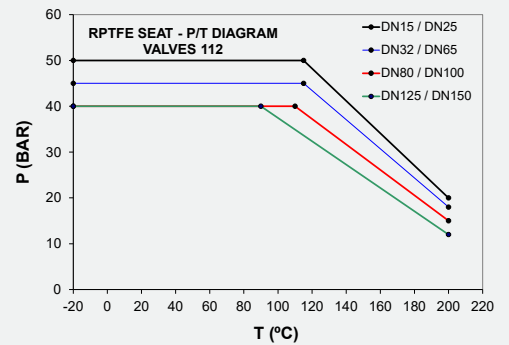
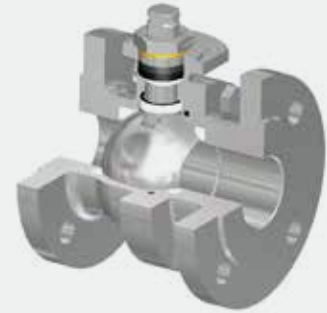
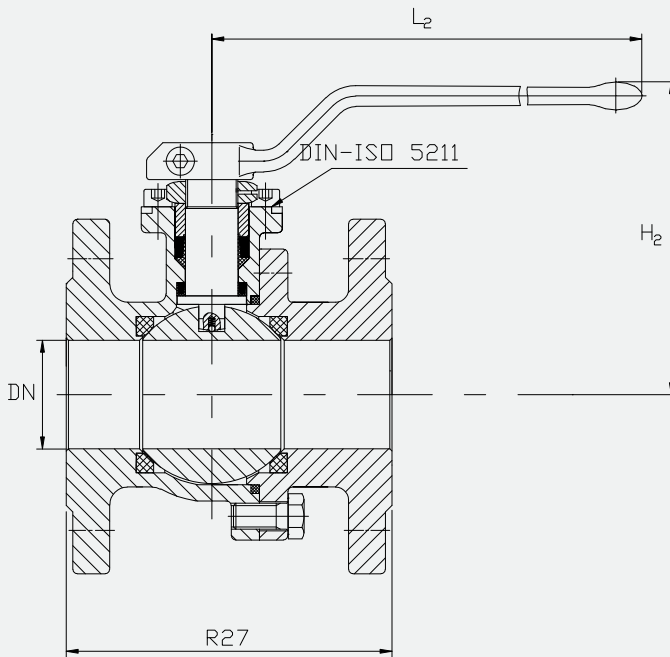


DN	L R1 (MM)	L R27 (MM)	H2 (MM)	L2 (MM)	TOP FLANGE ISO	WEIGHT R1 (KG)	WEIGHT R27 (KG)	TORQUE (NM*)
15	130	115	95	160	F05	2.9	3	9
20	150	120	101	160	F05	3.7	3.9	11
25	160	125	115	180	F05	4.6	4.9	13
32	180	130	125	180	F05	6.4	8	24
40	200	140	135	300	F07	8.5	9.6	32
50	230	150	145	300	F07	11.1	12.7	44
65	290	170	157	300	F07	16.4	18.4	55
80	310	180	197	450	F10	22.3	23.8	90
100	350	190	212	450	F10	33.5	37.8	120
125	400	325	230	800	F12	56	67	250
150	480	350	263	800	F12	80	83	390
200	400	400	310	800	F14	152	152	415

STANDARDS		MAIN FEATURES	MATERIALS
DESIGN	EN12516-1&2 ANSI B16.34&API 6D	Bidirectional Split body Flanged Ends Full bore Floating ball Soft seat Pressure relieving seats Anti blow out stem Antistatic device Locking device Fire Safe	BODY
FACE TO FACE	EN558-1		TRIM
FLANGED ENDS	EN 1092-1		SEATS
TOP FLANGE	ISO 5211		SPECIAL REQUIREMENTS
PRESSURE TESTS	EN12266-1/API 598/API 6D		Carbon steel , stainless steel, Duplex, Superduplex, Exotic materials...
VISUAL INSPECTION	MSS-SP-55		Stainless steel, Duplex, Superduplex, Exotic materials...
		PTFE, Reinforced PTFE, Viton, Nylon, Kelf, Devlon...	
		Heating jacket, cryogenic designs, all kind of operated, painting and coating	



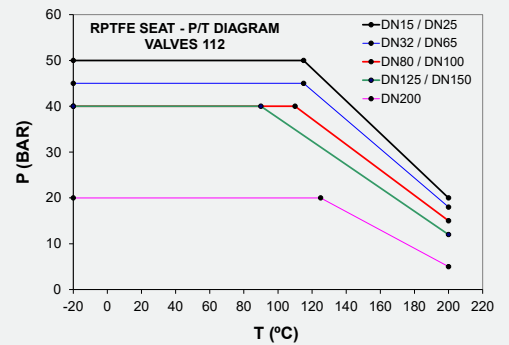
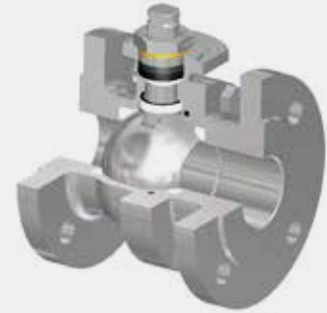
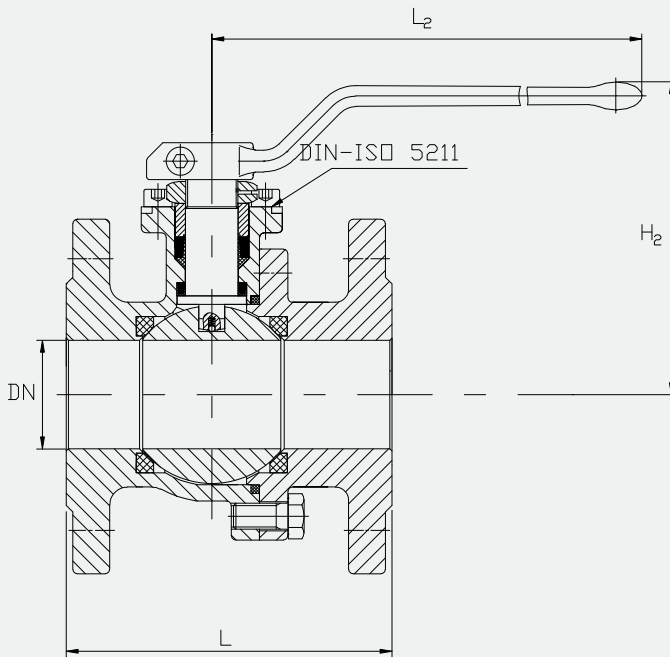


DN	L R1 (MM)	L R27 (MM)	H2 (MM)	L2 (MM)	TOP FLANGE ISO	WEIGHT R1 (KG)	WEIGHT R27 (KG)	TORQUE (NM*)
15	130	115	95	160	F05	3	2.9	12
20	150	120	101	160	F05	3.9	3.7	15
25	160	125	115	180	F05	4.9	4.7	17
32	180	130	125	180	F05	8	6.4	34
40	200	140	135	300	F07	9.6	8.5	45
50	230	150	145	300	F07	12.7	11.9	57
65	290	170	157	300	F07	18.4	16.4	70
80	310	180	197	450	F10	23.8	24.3	120
100	350	190	212	450	F10	37.8	33.5	200
125	400	325	230	800	F12	67	56	380
150	480	350	263	800	F12	83	80	720
200	-	400	310	800	F14	-	152	415

STANDARDS		MAIN FEATURES	MATERIALS	
DESIGN	EN12516-1&2 ANSI B16.34&API 6D	Bidirectional Split body Flanged Ends Full bore Floating ball Soft seat Pressure relieving seats Anti blow out stem Antistatic device Locking device Fire Safe	BODY	Carbon steel , stainless steel, Duplex, Superduplex, Exotic materials...
FACE TO FACE	EN558-1		TRIM	Stainless steel, Duplex, Superduplex, Exotic materials...
FLANGED ENDS	EN 1092-1		SEATS	PTFE, Reinforced PTFE, Viton, Nylon, Kelf, Devlon...
TOP FLANGE	ISO 5211		SPECIAL REQUIREMENTS	Heating jacket, cryogenic designs, all kind of operated, painting and coating
PRESSURE TESTS	EN12266-1/API 598/API 6D			
VISUAL INSPECTION	MSS-SP-55			



FIG. FHT-INTEC 112-A150

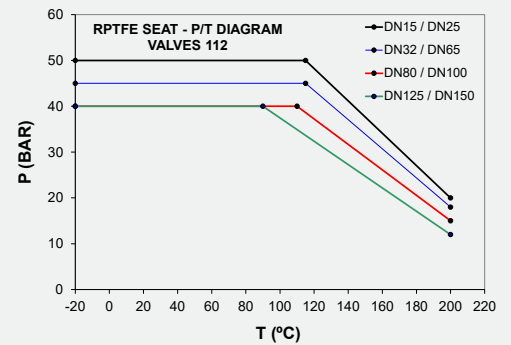
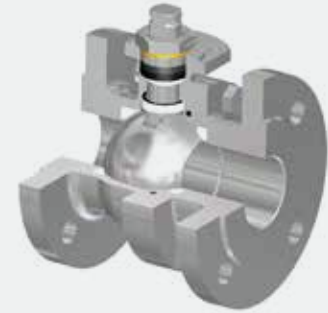
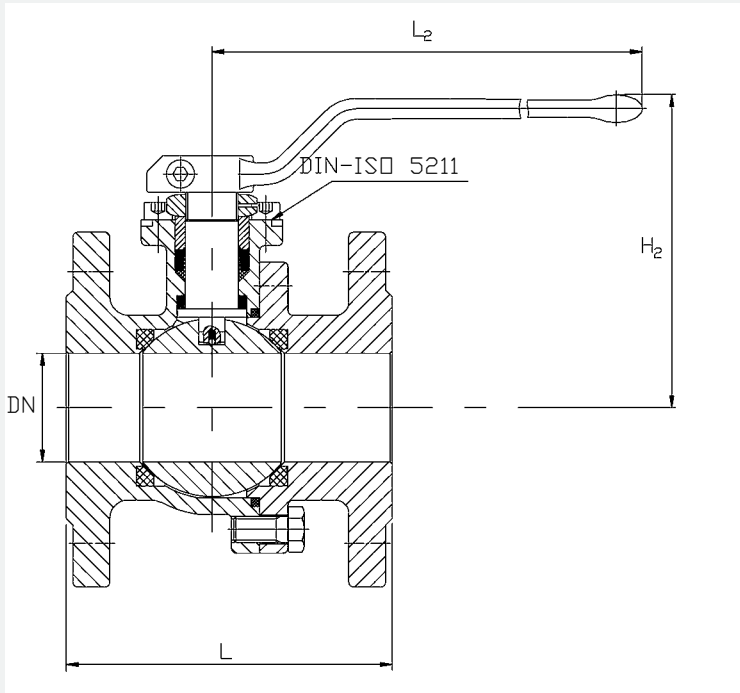


SIZE (")	L (MM)	H2 (MM)	L2 (MM)	TOP FLANGE ISO	WEIGHT (KG)	TORQUE (NM*)
1/2	108	95	160	F05	2.4	9
3/4	117	101	160	F05	2.9	11
1	127	115	180	F05	4.2	13
1 1/4	140	125	180	F05	5.9	24
1 1/2	165	135	300	F07	7.7	32
2	178	145	300	F07	11.6	44
2 1/2	190	157	300	F07	17	55
3	203	197	450	F10	23.8	90
4	229	212	450	F10	36	120
5	254	230	800	F12	54	250
6	394	263	800	F12	77	390
8	457	310	800	F14	150	415

*without safety factor

STANDARDS		MAIN FEATURES	MATERIALS	
DESIGN	EN12516-1&2 ANSI B16.34&API 6D	Bidirectional Split body Flanged Ends Full bore Floating ball Soft seat Pressure relieving seats Anti blow out stem Antistatic device Locking device Fire Safe	BODY	Carbon steel, stainless steel, Duplex, Superduplex, Exotic materials...
FACE TO FACE	ASME B16.10		TRIM	Stainless steel, Duplex, Superduplex, Exotic materials...
FLANGED ENDS	ASME B16.5		SEATS	PTFE, Reinforced PTFE, Viton, Nylon, Kelf, Devlon...
TOP FLANGE	ISO 5211		SPECIAL REQUIREMENTS	Heating jacket, cryogenic designs, all kind of operated, painting and coating
PRESSURE TESTS	EN12266-1/API 598/API 6D			
VISUAL INSPECTION	MSS-SP-55			





SIZE (")	L (MM)	H2 (MM)	L2 (MM)	TOP FLANGE ISO	WEIGHT (KG)	TORQUE (NM*)
1/2	140	95	160	F05	2.8	12
3/4	152	101	160	F05	4.7	15
1	165	115	180	F05	6.3	17
1 1/4	178	125	180	F05	8.2	34
1 1/2	190	135	300	F07	10.8	45
2	216	145	300	F07	15.9	57
2 1/2	241	157	300	F07	19.2	70
3	283	197	450	F10	31.5	120
4	305	212	450	F10	43	200
5	381	230	800	F12	67.5	380
6	403	263	800	F12	81	720

*without safety factor

STANDARDS		MAIN FEATURES	MATERIALS	
DESIGN	EN12516-1&2 ANSI B16.34&API 6D		Bidirectional Split body Flanged Ends Full bore Floating ball Soft seat Pressure relieving seats Anti blow out stem Antistatic device Locking device Fire Safe	BODY
FACE TO FACE	ASME B16.10	TRIM		Stainless steel, Duplex, Superduplex, Exotic materials...
FLANGED ENDS	ASME B16.5	SEATS		PTFE, Reinforced PTFE, Viton, Nylon, Kelf, Devlon...
TOP FLANGE	ISO 5211	SPECIAL REQUIREMENTS		Heating jacket, cryogenic designs, all kind of operated, painting and coating
PRESSURE TESTS	EN12266-1/API 598/API 6D			
VISUAL INSPECTION	MSS-SP-55			

